

OUTLAST®

GASTRIC SUPPORT SUPPLEMENT

SUPPORTS
GASTRIC COMFORT

TASTE HORSES
ENJOY

FAST
ACTING



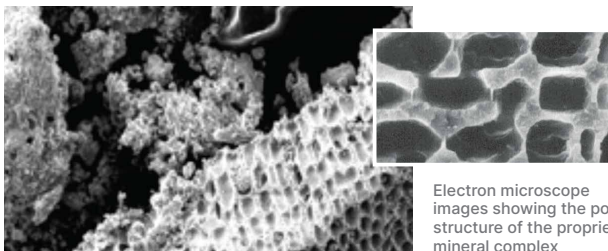
Supplement shown at smaller than actual size.
Natural variation may occur.

For Horses of All Ages and Activity Levels

Up to 90% of active horses experience gastric discomfort, which affects health, attitude and performance. The unique, fast-acting effectiveness of OUTLAST® technology is trusted by horse owners nationwide to support the gastric comfort of their horse.

Not All Calcium Sources Are Created Equal

Outlast® supplement contains a proprietary mineral complex with a unique honeycomb structure. The porous structure of this natural and bioavailable source of calcium and magnesium increases its surface area and enhances its capacity to support proper gastric health.



Electron microscope images showing the porous structure of the proprietary mineral complex



Supports Gastric Comfort

In stressful situations like stalling, weaning, exercise, new environments and travel



Taste Horses Enjoy

Tasty enough to be fed on its own



Fast Acting

Proven to reach its max effectiveness as soon as two minutes after feeding to support gastric health and optimal performance, as tested in a simulated gastric environment*

Simple, Powerful Ingredients

Proven to support gastric wellbeing, included at the right levels for the serving size

DEVELOPED BY PhD EQUINE NUTRITIONISTS

*Jacobs, RD, Gordon, ME. HR 246. 2016. Purina® Outlast® pH comparison.

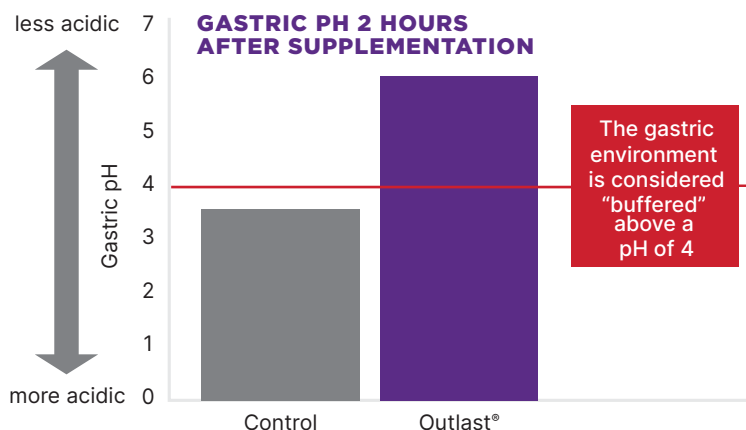


OUTLAST®
GASTRIC SUPPORT
TECHNOLOGY

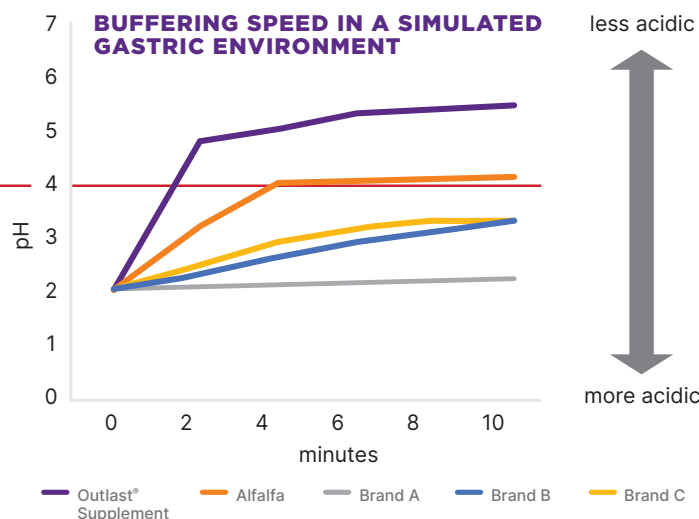
Exclusively from PURINA®

Outlast® gastric support technology provides support for your horse's gastric health, and gives you and your horse the confidence to perform. This proven technology is available as a supplement and is also included in select Purina horse feeds.

Equine gastric pH is less acidic in horses supplemented with Outlast® supplement




Outlast® supplement buffers faster and to a higher pH than other products on the market



Proven to Outperform

Outlast® isn't just another gut supplement — it's the result of hundreds of hours of research, peer-reviewed studies and real-world field testing.



95,492+
Field Test Feedings
Before Launch



3,000+
Hours of
Research



5+
Peer-Reviewed
Papers & Abstracts

| AMOUNTS OF OUTLAST® SUPPLEMENT TO FEED PER SERVING | | |
|--|----------------------------|-----------------------------------|
| Horse Body Weight (lbs) | Amount of OUTLAST® (grams) | Number of Cups* per Meal or Snack |
| 500-750 | 100 | 0.75 |
| 750-1,000 | 150 | 1.00 |
| 1,000-1,250 | 200 | 1.25 |
| 1,250-1,500 | 250 | 1.50 |
| 1,500-1,750 | 300 | 1.75 |
| 1,750-2,000 | 350 | 2.00 |

*Standard 8-oz kitchen measuring cups when measured by volume.

Feeding Directions

- This product is designed to be top-dressed on your horse's regular feed ration and/or fed as a "snack" within one hour prior to engaging in a potentially stressful activity.
- The feeding rate for both the top-dress and the "snack" is 20 g per 100-125 lbs body weight. This is equivalent to 200 g or 1.25 cups for a 1,000-1,250 lb horse. See chart for specific recommendations.
- Typical feeding rate is 2-4 servings per day — top-dressed with each meal and as a snack 30-60 minutes prior to a stressful event. Do not feed more than 6 times per day at the recommended rates for your horse's weight.
- Many Purina® horse feeds contain OUTLAST® supplement. Consult feeding directions for those products to determine the number of servings of OUTLAST® supplement being provided through the feed.
- Provide adequate forage (minimum of 1.2% of body weight) in the overall diet to maintain normal digestive function.

Guaranteed Analysis

| | |
|-------------------------------------|--------|
| Crude Protein (Min) | 12.00% |
| Crude Fat (Min) | 1.10% |
| Crude Fiber (Max) | 17.00% |
| Acid Detergent Fiber (ADF) (Max) | 21.00% |
| Neutral Detergent Fiber (NDF) (Max) | 35.00% |
| Ash (Max) | 18.00% |
| Calcium (Ca) (Min) | 4.00% |
| Calcium (Ca) (Max) | 5.00% |
| Phosphorus (P) (Min) | 0.45% |
| Sodium (Na) (Max) | 0.60% |
| Magnesium (Mg) (Min) | 0.95% |

Ingredients

Sun-Cured Alfalfa, Wheat Middlings, Seaweed-Derived Calcium, Cane Molasses, Magnesium Oxide, Citric Acid.



For more information, contact your local Purina retailer or visit purinamills.com.

